



Quick User Manual

Air³

www.fly-air3.com

Berfon SPRL 99 rue les tiennes B-5100 Wierde
Credits: XCTrack, OpenAndroMaps ([CC-BY-CA 2.0 License](https://creativecommons.org/licenses/by-ca/2.0/))

Introduction

Thank you for choosing AIR³!

AIR³ aims to help glider pilot's during leisure, cross country and/or competition flights.

AIR³ is provided with a customized, improved version of XCTrack PRO.

As an android tablet, AIR³ is fully compatible with any other android compatible software.

We sincerely hope that you will enjoy flying with your AIR³. Don't hesitate to send us your feedback.

More information, instructions and support are available through www.fly-air3.com

Index

Introduction	2
Index	3
Starting up	4
AIR ³ buttons/interface	5
Getting to know AIR ³ with XCTrack	6
Air ³ Manager	7
First steps	8
Set up the base	9
Frequently asked questions	10
Limited Liability & Limited Warranty	11
Technical specifications	12

Starting up



Air³ boots up. XCTrack is automatically launched.

If you have quit XCTrack, click on the main XCTrack widget to launch it again.

AIR³ buttons/interface



	Short press	Long press
1	Stand by/on/off	Power on/Off
2	Stand by off	Stand by off
3	Volume up	
4	Volume down	

5	Mini USB port
6	Earphone jack
7	Sim card slot
8	microSD card slot

Getting to know AIR³ With XCTrack



	Short pr ess	Long press
2	Previous Waypoint (competition)	Next Waypoint (competition)
3	Zoom in	Previous Page
4	Zoom out	Next Page

AIR³ Manager



This App allows you to:

- Automatically launch XCTrack on boot
- Manually launch XCTrack (large widget)
- Configure XCTrack Profile (Kiss – Easy – Expert)
- Configure XCTrack Theme (Black – White – eInk)
- Reset all settings of XCTrack to default

- Automatically get the latest Openair file (*1)
- Manually download the latest Openair file (*1)
- Clean up the the Openair file folder (delete files)

(*1): Openair (OA) files have to be located on a shared Google Drive (shared with you). The Air³ requires an internet connexion.

The OA files have to be named the following way:

OA.YY.MM.DD(D).txt

D: for files containing danger zones

Check our videos for more details...

First steps

- Register your AIR³ www.fly-air3.com/register
- Register on Xcontest for XCTrack Pro www.xcontest.org
- Read instructions and watch videos

www.fly-air3.com/download/

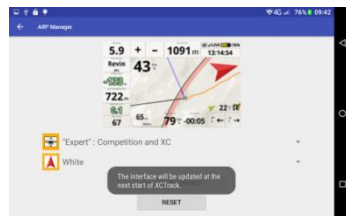
www.fly-air3.com/videos/

- AIR³ is provided with pre-installed maps. Therefore, the available memory is limited. **Should you need more space, use File Manager and remove the maps you don't need. Maps are located in**

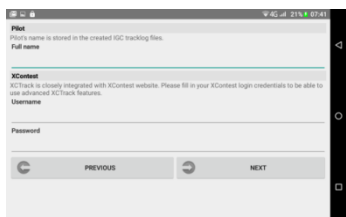
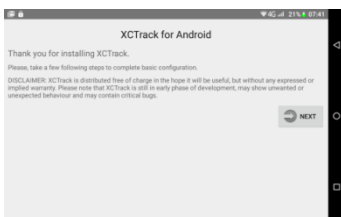
Phone storage/XCTrack/Map/RoadMap



-Choose your profile/theme with

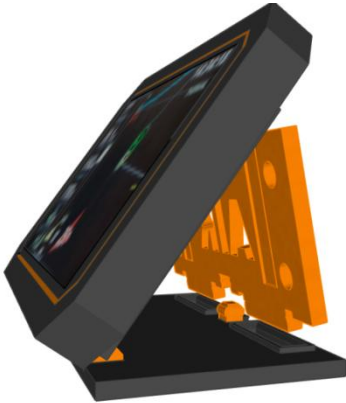
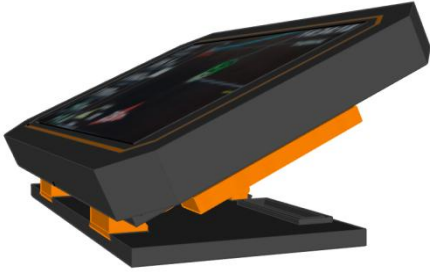


-Launch XCTrack Pro and fill in your details



Set up the base (Before or After Takeoff*)

To fix the base, please watch the tutorial: <http://www.fly-air3.com/en/videos>



*Only consider setting up the base after take off when there is no turbulence, you are far away from the ground and other pilots, and there is no danger of any kind.

Frequently asked questions, Manual, Videos, Download

Want to know more about AIR³?

Want to know more about AIR³ Manager?

Want to know more about XCTrack?

AIR³ website: <http://www.fly-air3.com>

FAQ: <http://www.fly-air3.com/faqs>

Videos: <http://www.fly-air3.com/videos>

Manual/Download:
<http://www.fly-air3.com/download>

Visit XCTrack website:
<https://xctrack.org/Manual.html>

Limited Liability

Before using it, note that it is the responsibility of the user to get used to the device and become familiar with operations and safety aspects of this device. Using the system improperly could cause failure and lead to possible property damage and/or personal injury.

Nor the manufacturer, nor the seller, assume no responsibility for property damage, accidents, injury or death that may result from the use of the misuse of this device/equipment. This includes any use of this device/equipment outside the scope of common sense, the User Manual, inserts and other related documentation.

This is a personal navigation assistance device only. It should not replace any legally required device, method or service. User must maintain all safety measures as if this device was not on board while flying.

EXCEPT TO THE EXTENT PROHIBITED BY APPLICABLE LAW, UNDER NO CIRCUMSTANCES SHALL THE MANUFACTURER BE LIABLE FOR CONSEQUENTIAL DAMAGES SUSTAINED IN CONNECTION WITH SAID PRODUCT AND THE MANUFACTURER NEITHER ASSUMES NOR AUTHORIZES ANY REPRESENTATIVE OR OTHER PERSON TO ASSUME FOR IT ANY OBLIGATION OR LIABILITY OTHER THAN SUCH AS IS EXPRESSED SET FORTH HEREIN.

Limited Warranty

This warranty does not limit the user's rights under any applicable national laws relating to the sale of consumer products.

The manufacturer warrants your AIR³ against defects in materials and workmanship for one (1) year from date of purchase (date of invoice).

The warranty is non-transferable and only valid if the manufacturer determines that the system and its components have not been damaged due to improper use, been submerged in fluids, dismantled or abused. Broken screen and batteries are out of scope of the warranty in any case.

The manufacturer reserves the right to determine if repairs are to be done under warranty or at a nominal charge. As a proof of activated warranty, a copy of the purchase invoice has to be provided.

Technical specifications

*Size & weight 214.5mm*133mm*18mm (H×W×D) / 590g*

*Waterproof -Dust-proof: **IP68** . **Dropproof and shockproof***

*System **Android OS 5.1***

*Display **7.0" HD LCD,1280*800.***

Mobile, Standard SIM card

- **2G:**GSM B8/B3/B2/B5
- **3G:**TD-SCDMA B34/B39,WCDMA B1/B2/B5/B8, CDMA:BC0
- **4G:**TDD-LTE B38/B40/B41 FDD-LTE B1//B3/B7/B20

*CPU: **Quad-core 1.3G***

*RAM/ROM: **2GB+16GB***

***Wi-Fi** 802.11b/g*

***SD card:** T-card Support TF card 32GB(max)*

***Touch screen** 5 points capacitive touch screen*

*Battery **7000mAh rechargeable Li-ion battery (built-in)***

*Camera Front: **2.0 MP** + Back : **13.0 MP***

Industrial grade GPS

Bluetooth 4.0

Barometer: accuracy: 0.1 m/s

NFC

Geomagnetic Sensor

Gravity sensor

Proximity sensor

Compass

Gyro Sensor/light sensor